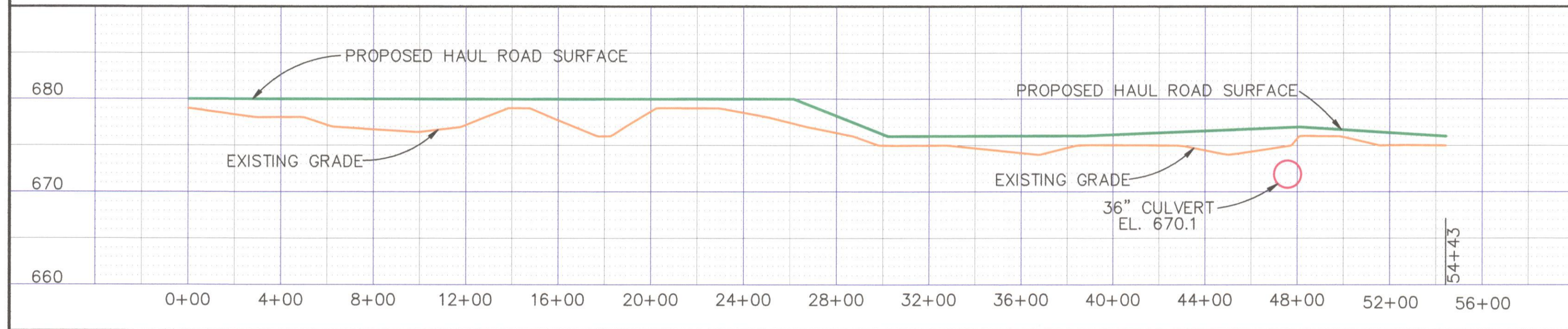


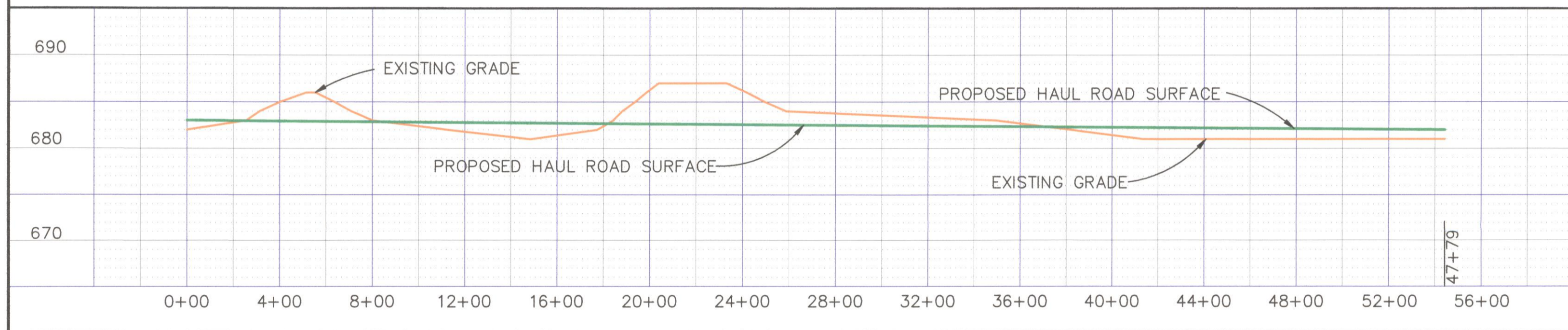
PROFILE HAUL ROAD #1

SCALE: 1" = 200' HORIZ.
1" = 10' VERT.



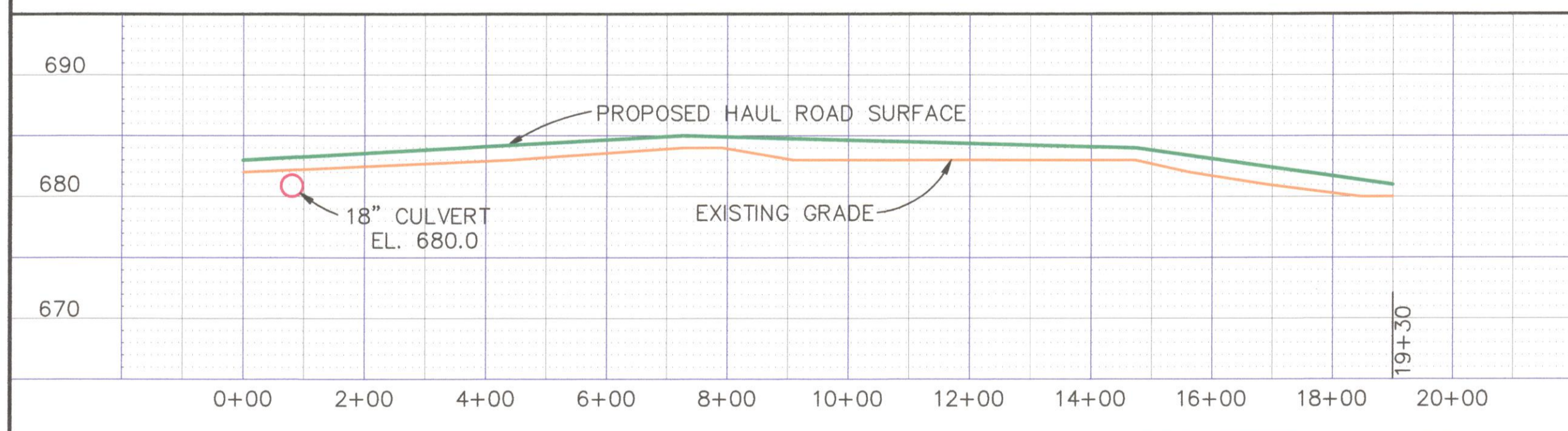
PROFILE HAUL ROAD #2

SCALE: 1" = 400' HORIZ.
1" = 10' VERT.



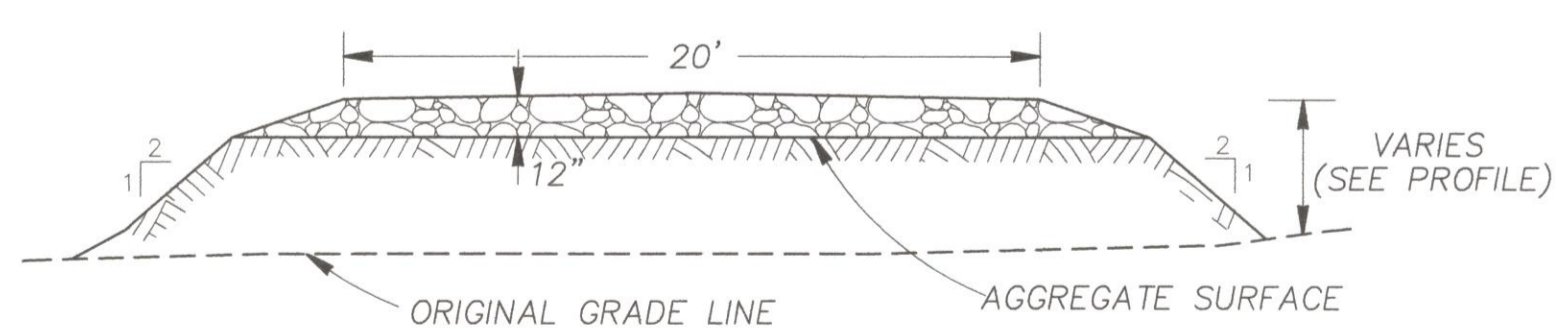
PROFILE HAUL ROAD #3

SCALE: 1" = 400' HORIZ.
1" = 10' VERT.



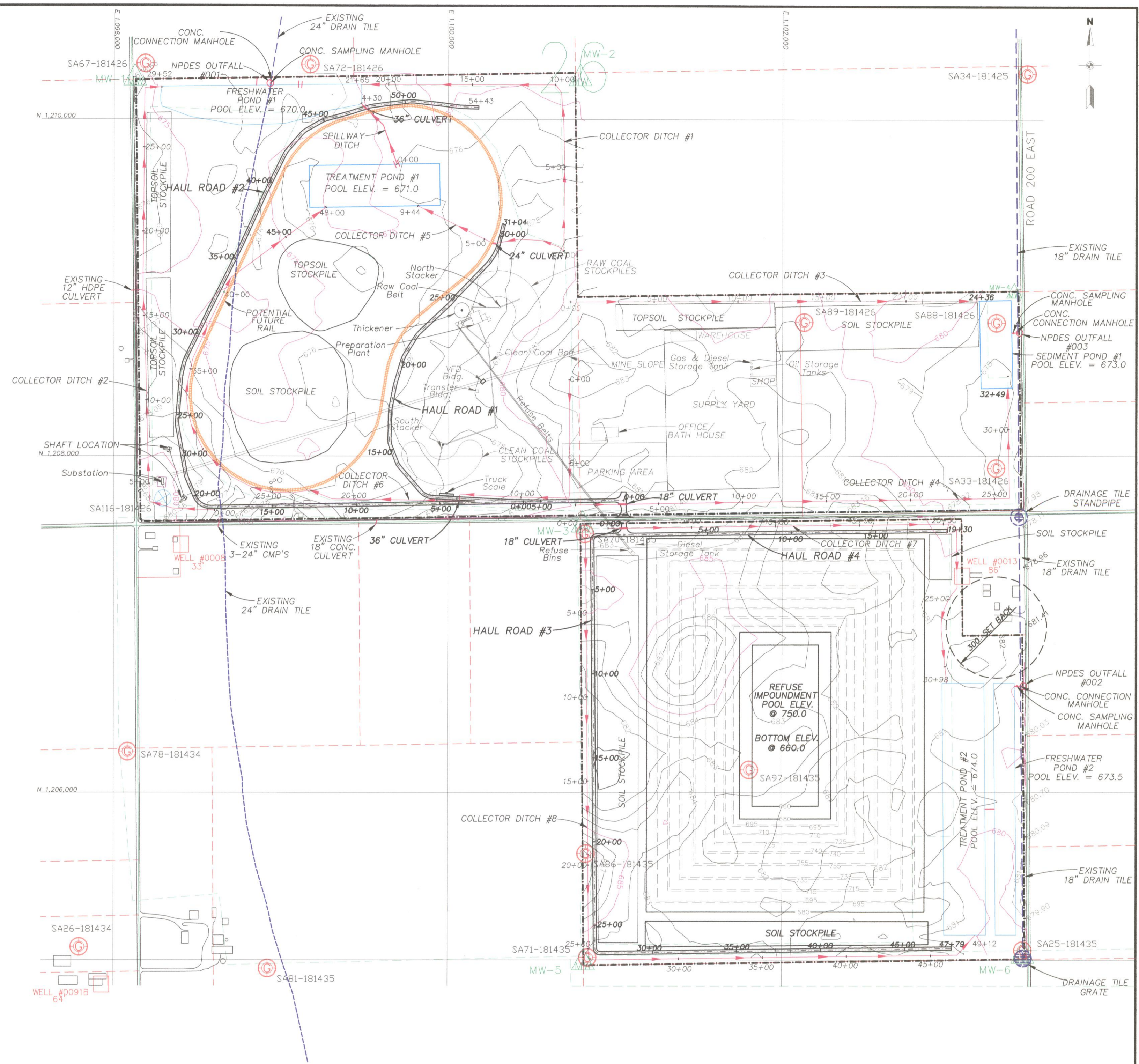
PROFILE HAUL ROAD #4

SCALE: 1" = 200' HORIZ.
1" = 10' VERT.



TYPICAL CROSS SECTION FOR HAUL ROADS

NOT TO SCALE



LOCATION MAP
SCALE: 1" = 400'

RECEIVED
DEPT. OF NATURAL RESOURCES
SPRINGFIELD
JUL 30 2014
OFFICE OF MINES & MINERALS
LAND RECLAMATION DIVISION

T.18N.-R.14W. SEC.26&35,
VERMILION COUNTY, IL

SUNRISE COAL, LLC
1183 EAST CANVASBACK DR. TERRE HAUTE, IN 47802
HAUL ROADS #1, #2, #3, & #4
PLAN, PROFILE, & CROSS SECTIONS

MINE: BULLDOG PERMIT: #429
DATE: JUNE, 2012 CHECKED BY:
SCALE: AS SHOWN MAP: HR-1

MIDWEST RECLAMATION RESOURCES INC.
P.O. BOX 1942
MURPHYSBORO, IL 62966
618-887-5590
FILE: DETAILS.DWG

NO.	DATE	BY	DESCRIPTION
1	3/2/14	JN	IGNR COMPLETENESS REVIEW RESPONSES

PERMIT # 429 REVISIONS